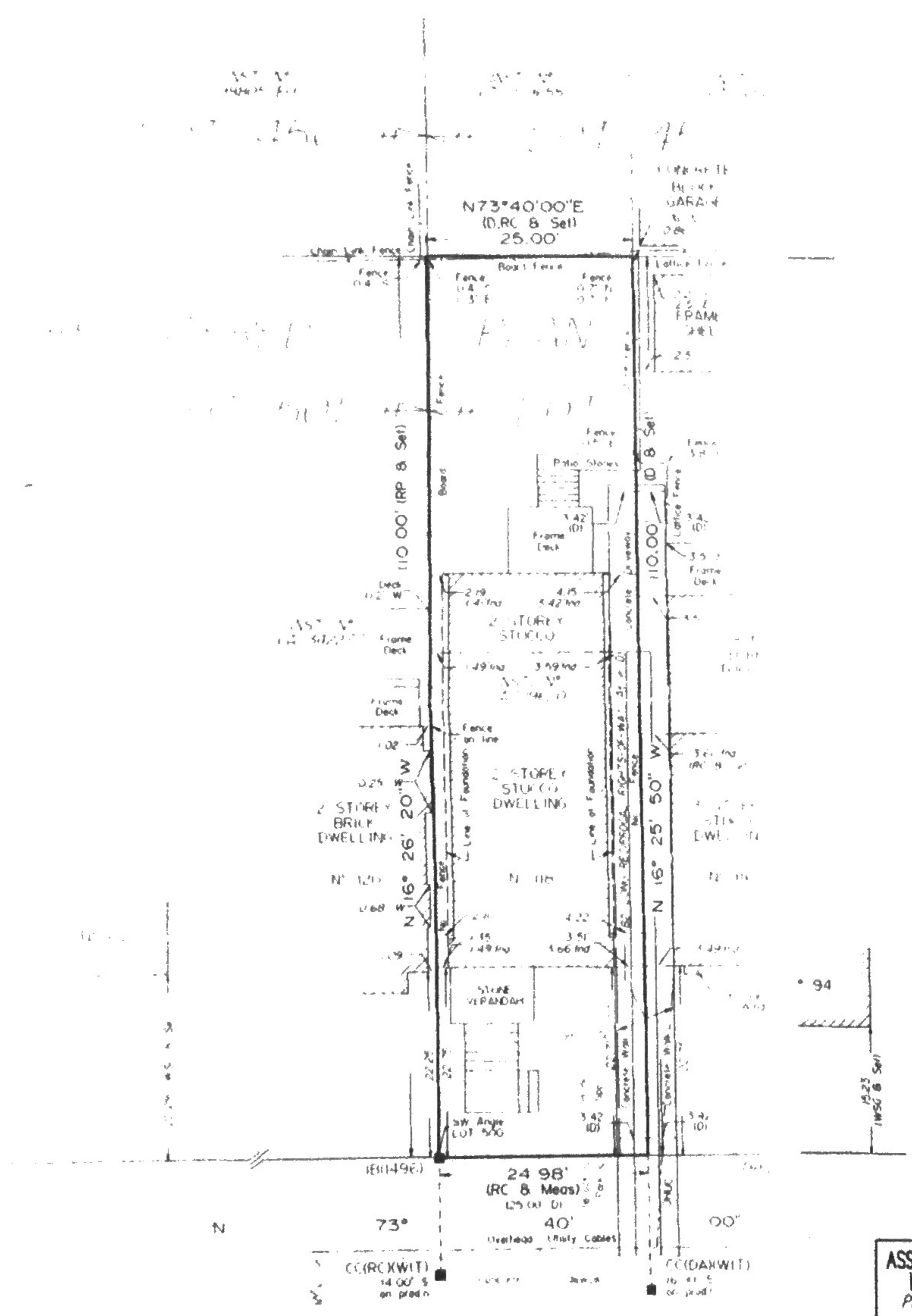


SURVEYOR'S REAL PROPERTY REPORT
 PLAN OF
 PART OF LOT 500
 REGISTERED PLAN 1501-Y
 CITY OF TORONTO

SCALE 1" = 15'



NOTE
 1) THIS PLAN MUST BE READ IN CONJUNCTION WITH SURVEY REPORT DATED AUGUST 9TH, 2002.
 2) THIS PLAN AND REPORT WERE PREPARED FOR JURI SEMENIUK AND THE UNDERSIGNED ACCEPTS THE RESPONSIBILITY FOR THE SAME BY THESE PARTIES.

IMPERIAL
 DISTANCES SHOWN HEREON ARE IN FEET AND CAN BE CONVERTED TO METERS BY MULTIPLYING BY 0.3048.

© COPYRIGHT
 NO PERSON MAY COPY, REPRODUCE, ALTER THIS PLAN IN WHOLE OR IN PART WITHOUT WRITTEN PERMISSION FROM RABIDEAU & CZERWINSKI, ONTARIO LAND SURVEYORS.

BEARING NOTE
 BEARINGS ARE ASTRONOMIC AND ARE REFERRED TO THE NORTHERLY LIMIT OF TRANSFORMER AVENUE HAVING A BEARING OF N 73° 40' 00" E AS SHOWN ON REGISTERED PLAN 1501-Y.

LEGEND

□	DENOTES	MONUMENT PLANTED
■	---	MONUMENT FOUND
WT	---	WITNESS
CC	---	CUT ROSS
IB	---	IRON BAR
RP	---	REGISTERED PLANT MARK
D	---	INST. N° (ANTENNA)
WSG	---	W.S. GIBSON
DA	---	D. ANCHER/12/1/02
RC/1496	---	RABIDEAU & CZERWINSKI
FND	---	FOUNDATION
OHUC	---	OVERHEAD UTILITY CABLE

SURVEYOR'S CERTIFICATE
 I CERTIFY THAT
 1. THIS SURVEY AND PLAN ARE CORRECT AND IN ACCORDANCE WITH THE SURVEYS ACT, THE SURVEYORS ACT, THE REGISTRY ACT AND THE REGULATIONS MADE UNDER THEM.
 2. THE SURVEY WAS COMPLETED ON AUGUST 9TH, 2002.

09 AUG 2002 DATE

 TOM CZERWINSKI
 (Ontario Land Surveyor)

CRANBROOKE AVENUE
 (Formerly DUNDEE AVENUE by Registered Plan 15)

ASSOCIATION OF ONTARIO
 LAND SURVEYORS
 PLAN SUBMISSION FORM
 1356554

THIS PLAN IS NOT VALID UNLESS IT IS AN EMBOSSED ORIGINAL COPY ISSUED BY THE SURVEYOR
 In accordance with Regulation 1028, Section 29(3)

R&C
RABIDEAU & CZERWINSKI
 ONTARIO LAND SURVEYORS
 777 THE QUEENSWAY, UNIT E, TORONTO, ONTARIO
 M8Z 1N4 (416) 252-2511

DRAWN : JHMOHER CHECKED BY : DM PLAN N° : R1496A